



ON THE QUEST FOR KNOWLEDGE

- ✓ Explores **hot topics** that relate to teens today
- ✓ Features up-to-date, **must-know topics** that spark interest in learning
- ✓ Easy-to-understand **Podcast and audio-enabled articles**
- ✓ A pack of **downloadable activity sheets**

Print



School subscription starting from **\$3.5/issue**

All inclusive:

- ✓ **Print**
- ✓ **Digital** (ePaper + Online resources)

ePaper available
A digital version of the print edition.



QUEST is a weekly English publication targeted to secondary students who are still expanding their knowledge of English. By regularly enjoying a tailor-made publication, they can improve their reading and listening skills and solidify their English knowledge base before they have to tackle more advanced reading materials. As a bonus, they get regular exposure of current topics.

It comprises a printed 4-page tabloid-sized periodical, audio of the articles read aloud, a 5-minute easy-to-understand podcast on a relevant topic, an online quiz, definitions of words and phrases with Chinese translations, etc.

Global English in popular culture

The front cover delves into a broad range of topics that provides opportunities to learn English in a non-academic format that young readers will find interesting. It will cover common vocabulary and idiomatic phrases commonly used in English-speaking countries. It includes:

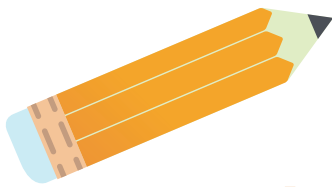
- Puns and idioms
- Articles read aloud by a native speaker
- Podcast
- Vocabulary help



Must Know (Essential topics to know)

- **Variety in topics:** short articles on must-know topics including technology, people, literature, music, culture, science, arts, etc;
- **Audio:** articles are read aloud by a native English speaker to give students more exposure to the way English sounds;
- **Video links:** provides video links to outside content to help expand their knowledge of topics in a visual format;
- **Vocabulary help:** translation of key words to aid comprehension.





World of Wonder (Spotlight on current topics of interest)

- **Up-to-date feature:** the article is focused on topics that are current and happening around the world. It will provide appealing news that they will find entertaining as well as enlightening;
- **'I Wonder Why':** Explain the facts or provides more background to the news topic to give students a fuller picture of the story;
- **Vocabulary help:** translation of key words to aid comprehension;
- **Review Quiz:** An online quiz to test students' understanding of all the articles.



Quest in digital devices



Read and listen to all issues available at your fingertips

What can you do?

- Read ePaper versions in **flipped format** and **text-only format**;
- **Listen to the articles** while reading the texts;
- Access the **Review Quiz**.

Download and save the worksheets

What can you do?

- Download the **Exercises** of the issues you wish to explore;
- Access the links of **external videos** related to the topics;
- Download the **Review Quiz** for a reading comprehension test and also a general knowledge quiz.

User guide to Quest online resources



Quest's Demo site



Building a clean Hong Kong

In densely packed cities like Hong Kong, where people in many districts live **close together** with small businesses like restaurants, localised hygiene **black spots** can frequently develop.

To prevent unwanted rises in pest populations such as rodents and man-made **reservoirs** like dropping air conditioners, the Hong Kong Government has created an online system that enables everyone to work together.

On 31 January, the government launched a new website displaying an online map that lists more than 700 hygiene black spots in various districts of Hong Kong. These spots include streets, back alleys and rubbish disposal areas.

The website, which is currently only in Chinese, allows citizens to witness and **monitor** the government's progress in Members of the public, including students, can view hygiene black spots by district or key in a location on the map for a direct search.

As you are all students who **commute** to school every day, you can play a vital role. Compare how the hygiene black spots look like when you pass by them before and after the cleaning operations.

Students can report **relapse cases** or new hygiene black spots by providing feedback on the website. This helps the government keep the programme on track. Newly reported spots will be added to the programme's list of hygiene black spots after being verified by the relevant department.

Responding to an avalanche of complaints from the public, the Chief Executive John Lee initiated the citywide environmental hygiene campaign when he took office in July 2022.

The initiative has been **implemented** and extended by Deputy Chief Secretary for Administration Cheuk Wing-hing. He urged citizens to join forces with the government to combat hygiene black spots and build a highly livable environment that all are proud to call home.



Idiom
Check by jowl
JOWL refers to the lower part of one's cheek. To be check by jowl with someone or something is to be very close together, side by side. The idiom is often used to describe cramped living conditions. For example, "The family of six lived check by jowl in a one-room flat."



Articles read aloud by a native speaker

Articles read aloud by a native English speaker to give students more exposure to the way English sounds.

Podcast

Scan the QR code to hear the One-minute English podcast presented by native English speaker.

Quest MUST KNOW

ENVIRONMENT Buy less, wear more

Do you purchase more clothes than you can wear? How much attention do you pay to the impact of products on the environment? We can all use a lesson in sustainable fashion.

The fashion industry in its current state is not **sustainable**. It adds more to climate change than the aeronautical and shipping industries combined. It wastes heavy environmental tolls with its chemical emissions and water waste, and exploits workers and harms animals too.

Also called "**ethical fashion**" and "**eco-fashion**", sustainable fashion is described by Eco Canada as "fashion developed by companies that pay their workers a living wage, give them safe, healthy working conditions and monitor its environmental impact, taking care to use more sustainable materials and reduce resource use throughout their product's life cycle". On the right are features of the kind of fashion.

Organic cotton
ORGANIC cotton is a sustainable fabric because it is grown without using synthetic fertilisers and pesticides that harm the environment. It can be used to reduce pesticides which has been the dominant flow for decades.

Eco-friendly
FABRICS that have already been designed, manufactured, distributed, and used in a manner that reduces the environmental impact of the fashion industry, such as using eco-friendly materials and recycling waste.

Recycled fabrics
RECYCLED materials that have been used previously and processed to create new fabrics. Using recycled fabrics reduces the amount of waste that is dumped in landfills and helps to conserve natural resources.

Animal rights
THERE are ethical concerns with materials like leather and fur which are made from animals. Sustainable fashion aims materials that do not harm animals and avoid the environmental impacts from raising animals for their hides.

Natural dyes
DYES made from plant and animal material are eco-friendly, renewable, and biodegradable. They are a natural alternative to chemical dyes that require a lot of energy to produce and are toxic to the environment.

Second-hand clothes
SECOND-HAND clothes can be recycled, swapped and donated. The redesigning of old clothes gives them **another lease of life**, and helps to reduce the waste and pollution of the fashion industry. It can also be a fun way to express one's creativity and individuality.

VOCABULARY

- 1. sustainable (adj) 可持续发展的
- 2. toll (n) 代价
- 3. ethical (adj) 道德的
- 4. organic (adj) 有机的
- 5. distribute (v) 分派
- 6. hide (n) 皮革

Video links

Provides video links to outside content to help expand students knowledge of topics in a visual format.

Quest WORLD OF WONDER

The life of the Wakhi shepherdeses

The Pakistani female sheep herders travel to work on a dangerous road and work shifts that last for months. They live a way of life that is dying out.



Those who are unhappy with their jobs may gain **perspective** by learning about the WAKHI shepherdeses – women of the "Simalu" village in the mountain region of northeast Pakistan who take sheep, goats and yaks for grazing at mountain **pastures**.

"That might sound like a laid-back way of making a living. But it is, in fact, a highly **hardcore** and hardy vocation, both for the shepherdeses and their children, whom they have to take to work."

"The road to the pastures, called Parik, is treacherous, reported BBC's Farhat Ishtiaq, who followed the shepherdeses on one of their last trips. It was no **exaggeration** when she observed, "The steep mountain trails wind and twist – one wrong step and you are gone."

Every summer, the shepherdeses leave home, carrying their children and supplies on along a narrow, rugged mountain path, through rain, snow and **scorching** heat, to take their flock to the lush green pastures 5,000 metres above sea level. In the odd days, they needed adequate clothing or shoes.

These **dauntless** women spend the entire summer looking after their flock. At night, they had to burn fires and sleep on the roof of their stone hut to avoid attacks by snakes and leopards. During the day, they make yoghurt and butter to take back to the village.

For generations, the women of the village, young and old, have lived this hard life until their daily business earned enough to fund the construction of the first road that linked the village to civilisation in the early 2000s, allowing their children to go to the outside world, receive an education and lead more comfortable lives.

Only a few of the shepherdeses are left, all in their old age. Soon, their way of life will become extinct as the younger generation bravely does not have to **follow in their footsteps**.

I Wonder

Grazing and pastures
GRAZING is to let livestock like cows, horses and sheep eat grass in a field. As a noun, it refers to land with grass that the livestock can eat. Such land is also called pasture. Grazing may cause ecological costs, if not properly managed. Decades of over-grazing cause damage to grasslands and can turn them into dry wastelands.

REVIEW QUIZ
Test your understanding of ALL the articles to receive the Challenge Quiz!

VOCABULARY

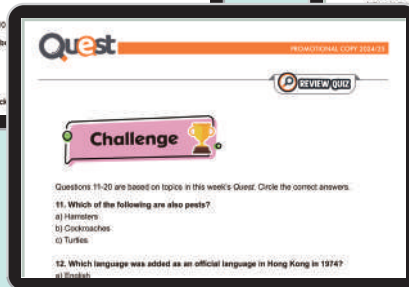
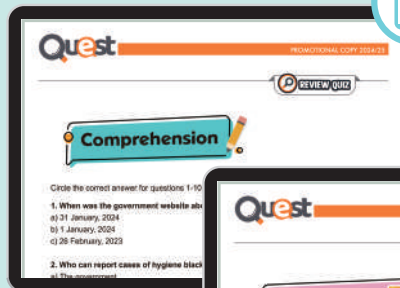
- 1. perspective (n) 看法
- 2. job (n) 职业
- 3. pasture (n) 牧场
- 4. hardcore (adj) 困难的
- 5. exaggeration (n) 夸张
- 6. scorching (adj) 灼热的

Review Quiz

An online quiz to test students' understanding of all the articles.

PDF

Downloadable Exercises and Review Quiz at a glance



Vocabulary & Phrases

Translation of keywords to aid comprehension.

Word Search & Anagrams

Word games for students to spark interest in learning English.

Review Quiz

Questions to test understanding of articles and includes a general knowledge quiz.

Answer Key

Answer Key is exclusive to teacher's account.



Subscriber Information

School Code: _____
(for official use)

School Chop: _____

School Name: _____

Address: _____

Contact Teacher: _____

Department: _____ Head Teacher Others: _____

Email address: _____

Mobile: _____ Fax: _____

(HKEJ Education may contact you through WhatsApp)

Subscription no.: S1 _____ S2 _____ S3 _____ S4 _____ S5 _____ S6 _____ Others _____ Total _____

I do not wish to receive any promotional material from HKEJ Education.

Package	Items	Gifts	Price (a)	No. of Issues (b)	No. of Copies (c)	Amount (a x b x c)
A	Print Digital Version (ePaper + Online Resources) Copyright Permission Letter	10 for Teachers 10 for Teachers	\$3.5	33	Min.240	\$ _____
B	Print	Digital Version for Students (if schools subscribe to a minimum of 25 issues)	\$6	_____	Min.25	\$ _____
Teachers	Print# Digital Version (ePaper + Online Resources) # mailed every week by post	—	\$390	33	No min. requirement	\$ _____ (a x c)
					Total	\$ _____

*Digital-only subscription available for schools. Please contact us for details.

2024-25 Subscription Calendar

Published every MONDAY (Please circle selected issues)

Sep 24			16	23	30
Oct		7	14	21	28
Nov		4	11	18	25
Dec	2	9	16		
Jan 25		6	13	20	
Feb		10	17	24	
Mar	3	10	17	24	31
Apr		7	14		28
May			12	19	26
Jun	2	9			

Total _____ / 33 issues

Terms and Conditions

- This school subscription plan is available for schools or teachers only, school chop is required for every subscription.
- Each subscription form is processed as a single order. **If separate invoices are required, please photocopy the forms and submit them separately.**
- School must subscribe to at least 25 printed copies daily to enjoy free school delivery. If the quantity of subscriptions is below the minimum requirement, please contact our staff.
- The subscription order will commence within 14-20 working days upon receipt of the form; teachers' and students' digital subscription accounts will be offered via email notice. All the accounts will be expired on 31 Aug, 2025.
- Print copies will be delivered to schools before 8:30 am. Please contact us the same day before 10:30 am if there is any delivery problem.**
- Print subscriptions for teachers will be mailed every week. (International postage is not included. HKEJ shall not be responsible for any delay in postage)
- If the EDB announces suspension of face-to-face classes, the PDF or digital edition will be substituted for the Print edition.
- Subscription fees are non-refundable.
- In case of any disputes, Hong Kong Economic Journal Co., Ltd. reserves the right to fonal discretion.